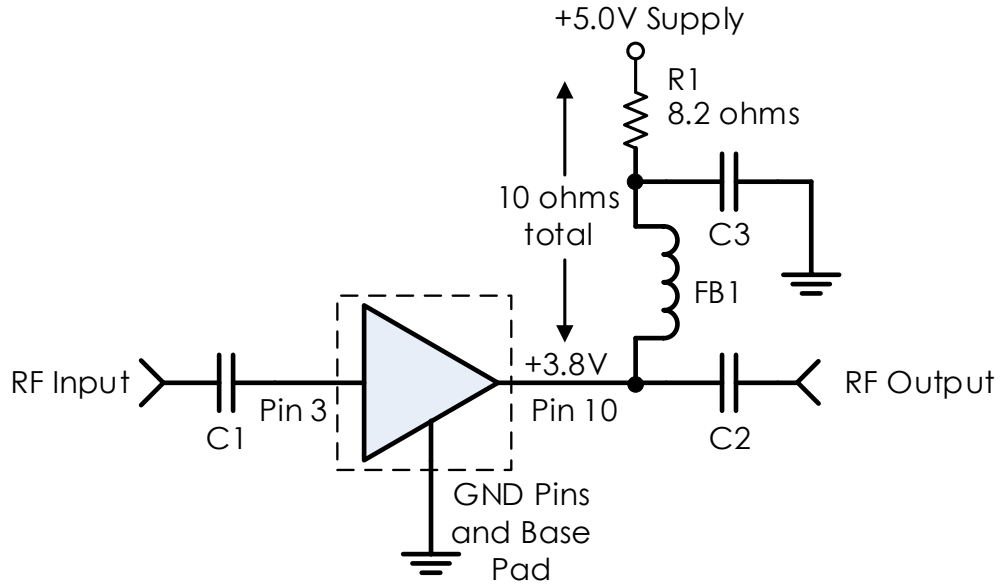


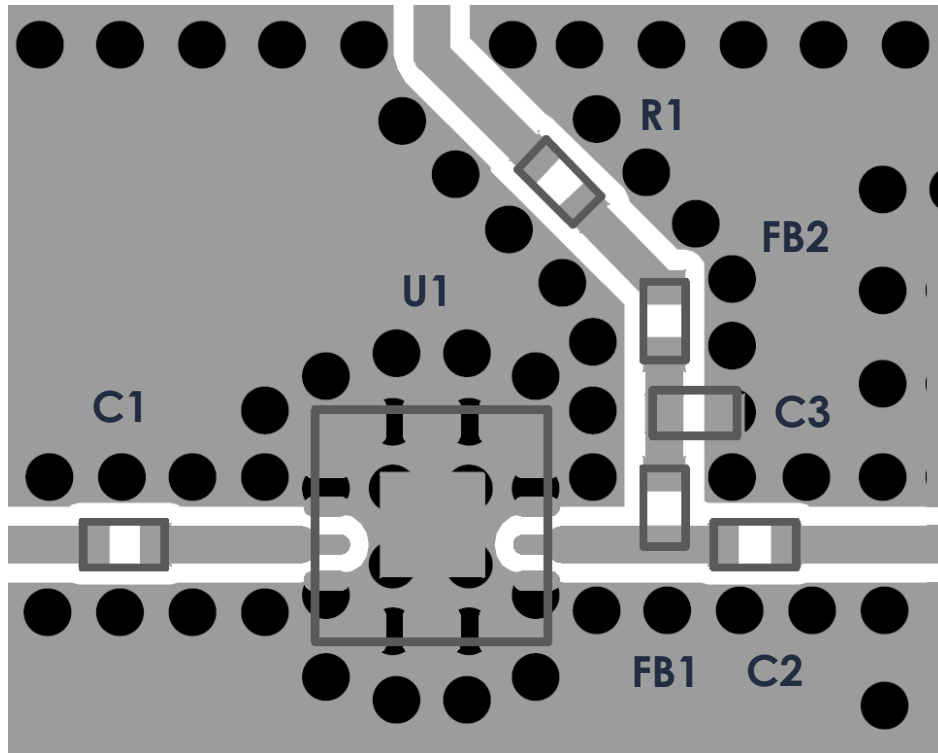
### Typical Application



### Recommended Component List (or equivalent):

Part	Value	Part Number	Manufacturer
C1, C2	0.1 uF	0402BB104KW160	Passives Plus
C3	0.1 uF	GRM155R71C104KA88	Murata
FB1	-	MMZ1005A222E	TDK

### Recommended Layout



#### Notes:

1. FB2 = FB1 = MMZ1005A222E for symmetry.
2. R1 ~ 8 ohms.
3. Recommended input trace is grounded coplanar waveguide, 50 ohms.
4. IC and RF input / output should be via fenced.
5. Vias should be placed under IC and GND pads.

### Revision History

Date	Revision Number	Notes
June 25, 2020	1	Initial Release