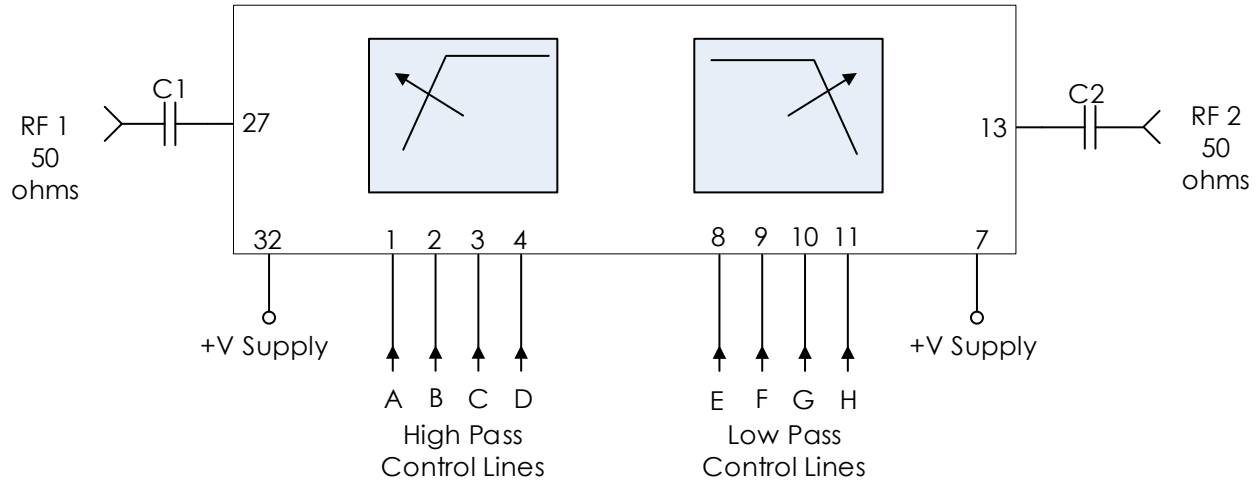


Typical Application



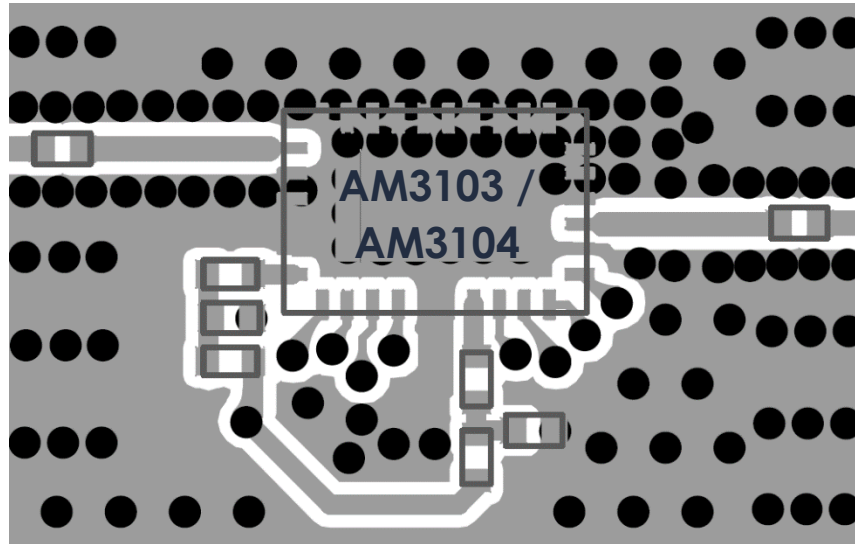
Recommended Component List (or equivalent):

Part	Value	Part Number	Manufacturer
C1, C2	0.1 μ F	0402BB104KW160	Passive Plus

Notes:

- DC blocking capacitors should be low-loss, broadband capacitors for optimum performance
- VDD and control lines filtered internally providing high frequency isolation to 50 + GHz.
 - See AM35 datasheet for more information.
 - Adding an additional ferrite bead, LC, or LCL filter on VDD lines is recommended in applications that have space to improve VDD isolation

Recommended Layout



Notes:

1. Power line filtering is made symmetric here such that it is L – C – L filtering. L – C filtering or even a single ferrite bead may be used if space is critical.
2. Recommended input trace is grounded coplanar waveguide, 50 ohms.
3. IC and RF inputs / outputs should be via fenced.
4. Vias should be placed under IC and GND pads (not shown).
5. Vias shown are 10mil hole size with 24mil pad.

Revision History

Date	Revision Number	Notes
May 21, 2020	1	Initial Release