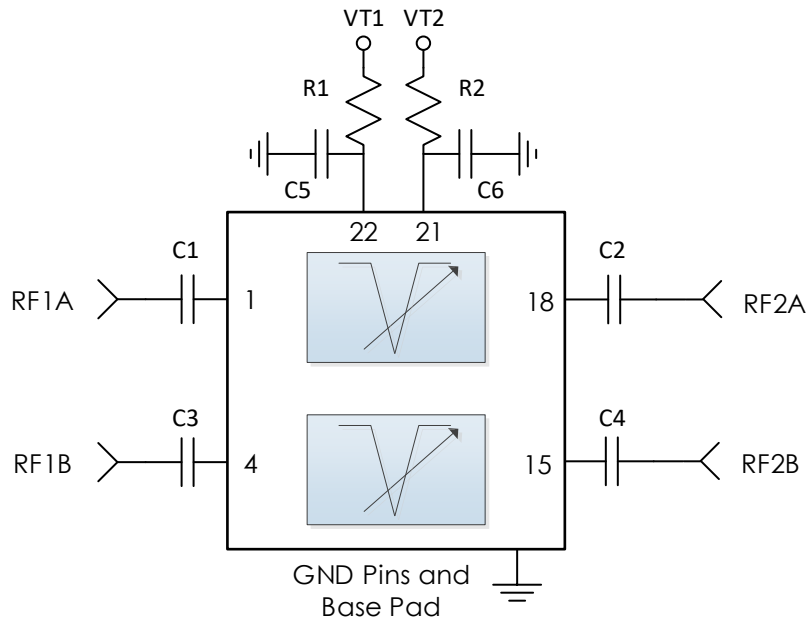


### Typical Application



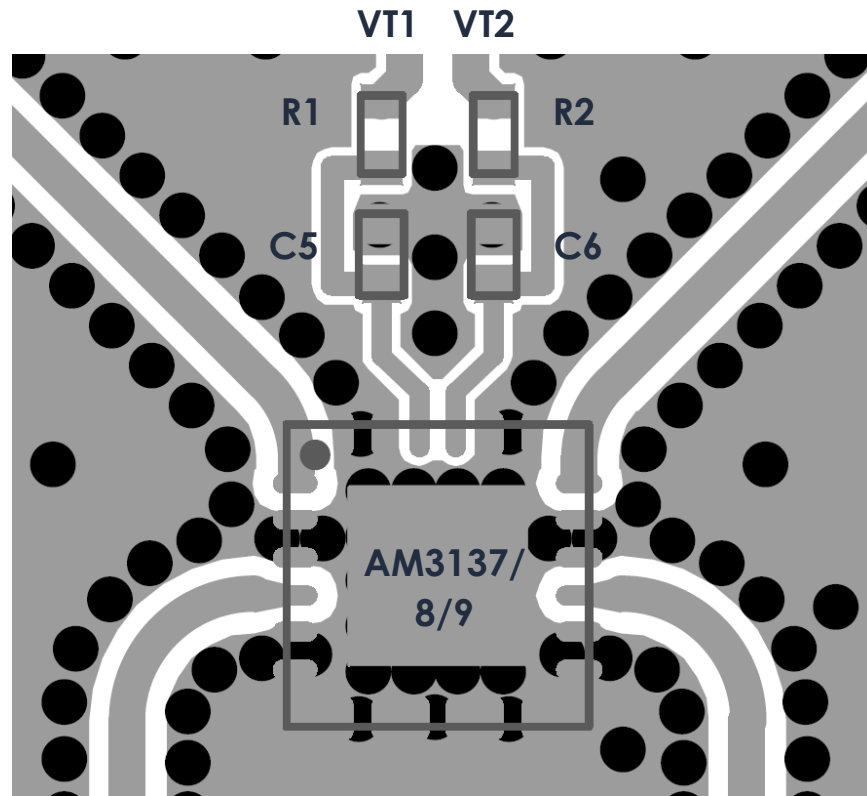
### Recommended Component List (or equivalent):

Part	Value	Part Number	Manufacturer
C1 – C4	0.1 $\mu$ F	0201BB104KW160	Passives Plus
C5, C6	0.1 $\mu$ F	C1005X7R1H104K050BB	TDK
R1, R2	100 $\Omega$	CRCW0402100RFKED	Vishay

### Notes:

1. RC filtering on control lines is recommended to prevent digital noise from coupling to RF path.
  - a. Select tune voltage line RC filter values based on desired logic source decoupling and switching speed.

### Recommended Layout



#### Notes:

1. RC control line filtering should be placed as close as possible to IC while still maintaining proper coplanar waveguide structure into RF ports.
2. DC blocks C1 – C4 not shown here though they still must be installed.
3. Recommended input trace is grounded coplanar waveguide, 50 ohms.
4. IC and RF inputs / outputs should be via fenced.
5. Vias should be placed under IC and GND pads (not shown).
6. Vias shown are 10mil hole size with 24mil pad.

### Revision History

Date	Revision Number	Notes
June 22, 2020	1	Initial Release